

# REPLACE LEGACY T1 SERVICES WITH UNLIMITED WIRELESS BROADBAND FOR SIGNIFICANT SAVINGS

Fixed-bandwidth LTE Solution - 3, 8, 12 Mbps Options for NxT1 Replacement

## Rising Cost of Leased-Line Services

The cost of T1 services has been rising as carriers struggle to maintain the aging leased-line infrastructure. Fees for leased-line services can cost from a few hundred dollars per month for a single T1 connection up to thousands of dollars for hard-to-reach locations. Deployment of new services and bandwidth upgrades in a leased-line environment are both slow and expensive.

## Wireless Broadband: Leased-Line Alternative with Potential Cost Savings up to 40%

Wireless services have traditionally been offered on a usage-based pricing

model, until now. Globalgig's Unlimited Wireless Broadband service can be rapidly deployed to replace T1 or NxT1 services at a significantly lower cost. For some difficult to reach locations, 40% or more savings can be achieved. Flexibility and ubiquitous coverage of wireless services means it can be leveraged for:

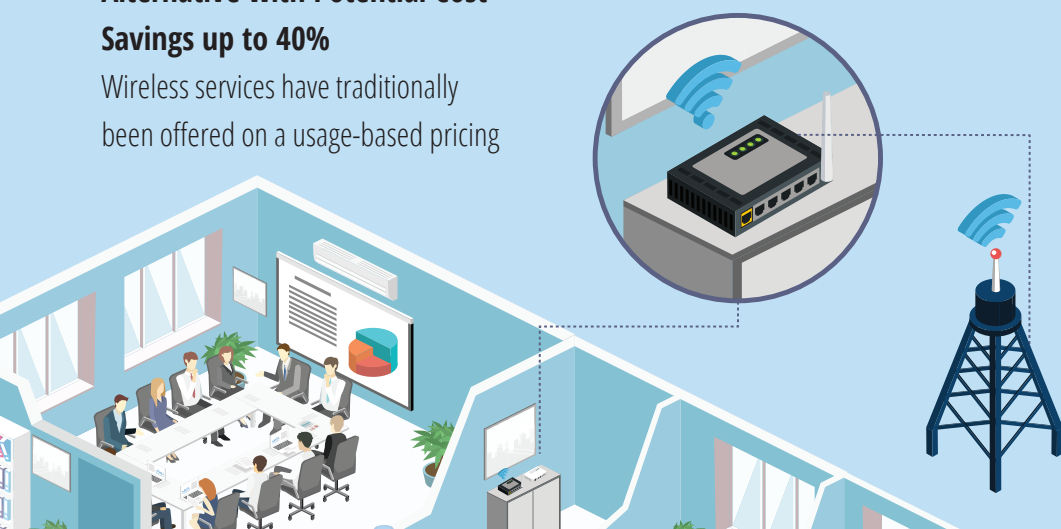
- Primary connectivity at remote locations
- Failover solution as part of business continuity strategy

## Fixed- Bandwidth, Unlimited Usage LTE Solution

Globalgig's Wireless Broadband service delivers fixed bandwidth, unlimited usage LTE service, bundled with a wireless router with Ethernet handoff, all managed by Globalgig's 24/7 Global NOC. Just like any other WAN service, Globalgig streamlines WAN carrier management and provides the single-point of contact and customer care for all wireless WAN access.

Bandwidth options include:

SERVICE	SPEEDS UP TO
WIRELESS BROADBAND - 3MBPS	3MBPS
WIRELESS BROADBAND - 8MBPS	8MBPS
WIRELESS BROADBAND - 12MBPS	12MBPS



## 5G Pathway to 5G

As 5G deployment is underway, enterprises are replacing legacy WAN connectivity footprint from the bottom up. LTE solutions offering unlimited usage at a fixed price give enterprise customers a predictable monthly cost and a pathway to 5G, balancing business needs with budget realities.



### Service Details and Restrictions

Globalgig Wireless Broadband is a connectivity solution that provides a data only LTE wireless connection for use at fixed locations using approved/eligible LTE enabled routers and for use in the United States, Puerto Rico, and the U.S. Virgin Islands only. Plans do not include roaming. Globalgig Wireless Broadband plans offer tiered speeds, of up to 3 Mbps, 8 Mbps, and 12 Mbps with no overage charges. Globalgig Wireless Broadband is not intended for use with streaming video, streaming audio, web hosting and public or guest Wi-Fi. Globalgig will identify and notify users with excessive usage and will engage the user to review if the usage is in line with official business use for business-critical applications and business-critical data which does not include streaming video, streaming audio, web hosting and public or guest Wi-Fi. If user is not in compliance with these terms, Globalgig will require user to move to a usage-based plan. Data speeds for each plan are maximum data speeds; actual speeds may be slower, particularly after a usage threshold has been met. The thresholds are 75 GB for the 12 Mbps plan, 50 GB for the 8 Mbps plan and 0 GB for the 3 Mbps plan. After a data usage threshold on a service has been met in a given month, data may slow on that line during periods of network congestion for the remainder of that cycle.

**GET CONNECTED WITH GLOBALGIG**  
[www.globalgig.com](http://www.globalgig.com)  
[us.sales@globalgig.com](mailto:us.sales@globalgig.com)