

# CUSTOMER USE CASE: SD-WAN



## Business Challenges

- Migration to Cloud-based Services: Customer moving from legacy in-house ERP to cloud based ERP solution.
- Unreliable Internet Access: Manufacturing plants and corporate offices experience frequent Internet service issues.
- Aging Infrastructure: Rapid growth and reliance on a local service provider resulted in a poor performing and aging network infrastructure.
- Single Point of Failure: Lack of network resiliency between its main datacenters and major office locations.

## Globalgig Methodology

Globalgig kicked off the project with a series of technical requirements and design meetings with key stake holders. The team performed deep dives into the customer's current network architecture from routing, switching and IP addressing schemes to connectivity and security. Globalgig's technical team worked with the customer to review core network configurations, performed site walkthroughs to evaluate data center capabilities and to verify migration plans.

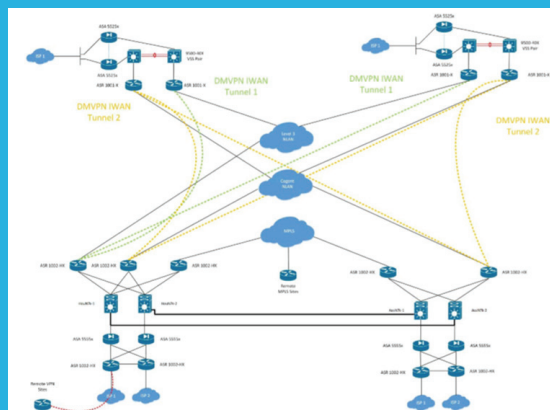
The deliverable from this discovery phase was a set of recommendations for network re-architecture, statement of work (SOW) and pricing based on customer specifications. The SOW included project implementation, network design documentation, ongoing management with service level agreement.

## Globalgig Solution

- Globalgig designed a Cisco iWAN solution across multiple transit types, including dark fiber, native LAN, point-to-point circuits, providing sub-second failover for all business applications between data centers and offices.
- Globalgig re-architected the customer security by collapsing stand-alone firewall and intrusion prevention system (IPS) into a single high availability next-generation firewall platform in multiple data centers and large offices.
- Globalgig added segmentation at each data center and office.
- Globalgig re-deployed a Cisco ISE environment, providing 802.1x wireless and wired network access control for over 30,000 concurrent sessions.
- For the data centers, Globalgig Implemented Software Defined Networking with Cisco ACI.
- At the branch sites, Globalgig designed a Cisco Viptela solution supporting 10Gbps of tunneled traffic into their data centers and directly into Microsoft Azure.
- Globalgig was instrumental in migrating customer off over 300 MPLS circuits.

## Customer Benefits

- Optimal solution that is designed from a platform and network agnostic approach, based specifically on customer needs.
- Streamlined management as Globalgig provided end-to-end solution from design and implementation to on-going management.
- Efficiently migrated off over 300 MPLS circuits with one trusted partner.



## Industry

**Infrastructure Services**

## Company

Global Fortune 200 Company with more than 300 independently operating business units.

The company is a leading specialty contractor with the largest and highly trained skilled workforce in North America – providing fully integrated solutions from planning, design to installation, management and repair for the electric power, pipeline, industrial and communications industries.

The company's geographic footprint spans North America, Latin America and Australia, and its network of companies ensures world-class execution with local delivery.